[illegible]

PRELIMINARY PLAN
NOT FOR CONSTRUCTION

**THESE PLANS ARE NOT FULLY PERMITTED
AND ARE SUBJECT TO REVISIONS MADE
DURING THE PERMITTING PROCESS.**

**RESPONSIBILITY FOR THE USE OF THESE
PLANS PRIOR TO OBTAINING PERMITS FROM
ALL AGENCIES HAVING JURISDICTION OVER
THE PROJECT WILL FALL SOLELY UPON THE
USER.**

| | |
|-------------|----------|
| ISSUE DATE: | 12/19/25 |
|-------------|----------|

DESIGNED BY: NW

DRAWN BY: FA

| | |
|-------------|----|
| CHECKED BY: | NW |
|-------------|----|

| |
|----------------------|
| BID-CONTRACT: |
|----------------------|

NILES T. WARRICK, P.E.
FLORIDA REG. NO. 94320
(FOR THE FIRM)

CLIENT

**JADIAN IOS
4800 HAMPDEN LANE,
SUITE 420
BETHESDA, MD 20184**

| |
|---------|
| PROJECT |
|---------|

**1621 BLOUNT RD
OUTDOOR STORAGE
1621 Blount Road
Pompano Beach FL**

SHEET TITLE

FIRE ACCESS PLAN

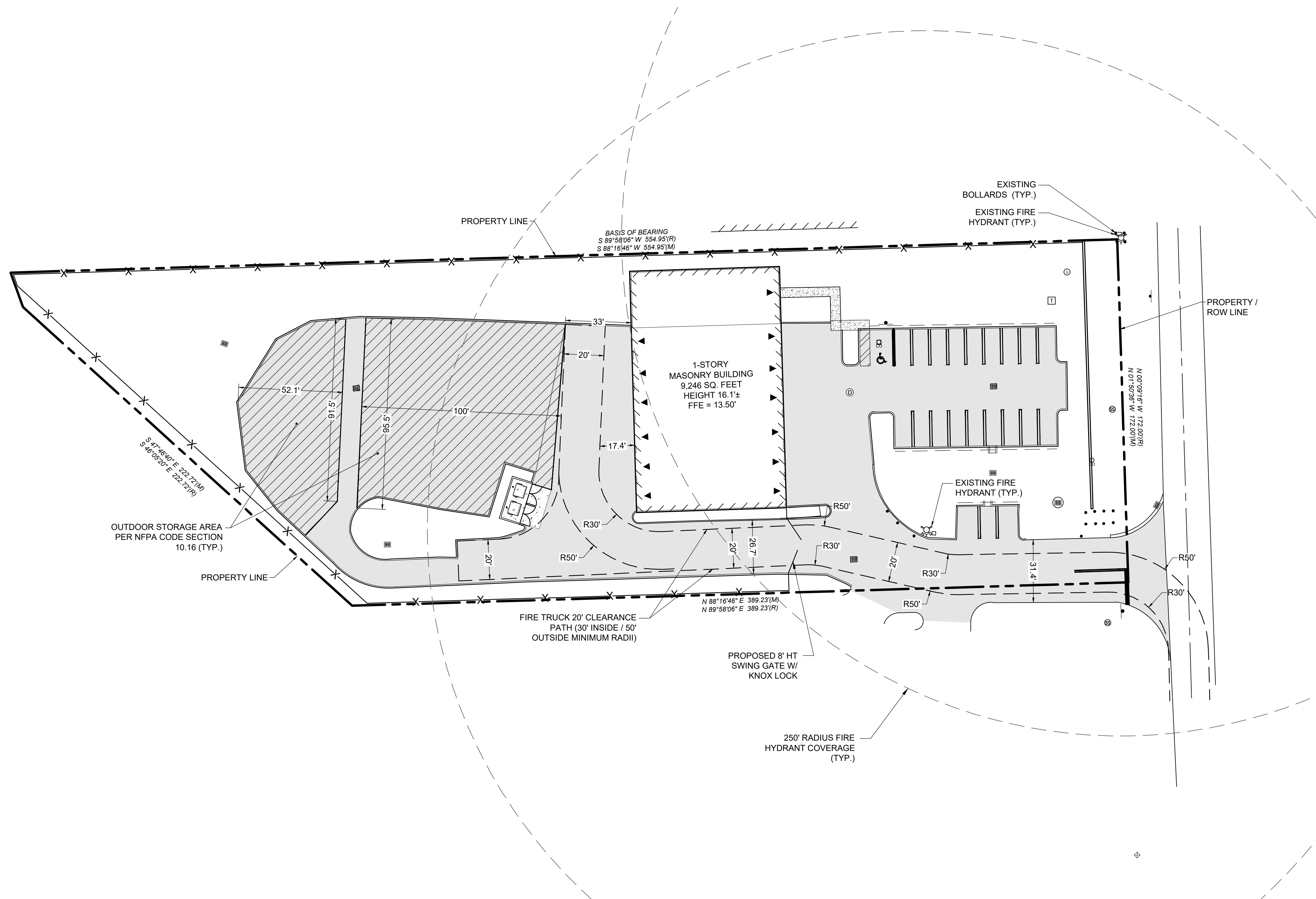
**SHEET
NUMBER** **FA-101**

| | |
|----------------|----------|
| PROJECT NUMBER | 15564.00 |
|----------------|----------|

Plotted by: mamodio On 12/23/2025 10:54 AM

Drawing name: H:\15564.00 - 162\Blount Road - Pompano Beach - Jaldan JOS\Engineering\Cadd\15564.00-FA-1XX.dwg

STATIIS: DPEI IMINAPV



PLAN NOTES:

1. HEIGHT OF OUTDOOR STORAGE NOT TO EXCEED HEIGHT OF PERIMETER SCREENING
2. OUTDOOR STORAGE AS A PRINCIPAL USE IS THE KEEPING, IN AN AREA THAT IS NOT TOTALLY AND PERMANENTLY ENCLOSED, OF ANY FINISHED GOODS, MATERIAL, MERCHANDISE, BOATS, OR VEHICLES IN THE SAME PLACE FOR MORE THAN 24 HOURS, WHERE SUCH STORAGE IS THE PRINCIPAL USE OF A LOT. THIS USE DOES NOT INCLUDE A JUNKYARD OR SALVAGE FACILITY OR THE DISPLAY AND STORAGE OF VEHICLES AS PART OF AN AUTOMOBILE, RECREATIONAL VEHICLE, TRAILER, OR TRUCK SALES OR RENTAL USE.
3. ALL OUTDOOR STORAGE AREAS TO BE PAVED, INCLUDING 10' FIRE BREAKS
4. VISIBILITY AND UNOBSTRUCTED WORKING SPACE MUST BE MAINTAINED FROM FIRE APPARATUS ACCESS ROUTES TO FIRE PROTECTION AND LIFE SAFETY APPLIANCES / EQUIPMENT. THESE INCLUDE BUT NOT LIMITED TO: FIRE HYDRANTS, FIRE DEPARTMENT CONNECTIONS (FDC), POST INDICATING VALVES (PIV), FIRE SPRINKLER RISERS, FIRE ALARM CONTROL PANELS, AND ELECTRICAL ROOM LOCATIONS.
5. CLEAR SPACE AROUND FIRE HYDRANTS, FIRE DEPARTMENT CONNECTIONS (FDC), AND ANY OTHER FIRE APPLIANCE REQUIRING CLEARANCE FOR ACCESS. A 36-INCH CLEAR SPACE SHALL BE MAINTAINED AROUND THE CIRCUMFERENCE OF THE FIRE HYDRANT / APPLIANCE.
6. REFER TO CIVIL DETAILS FOR FIRE HYDRANT CLEAR ZONE DETAIL.
7. FIRE DEPARTMENT ACCESS ROADS SHALL BE DESIGNED AND MAINTAINED TO SUPPORT A MINIMUM OF 32 TONS AND SHALL BE PROVIDED WITH A SURFACE SUITABLE FOR ALL-WEATHER DRIVING CAPABILITIES.
8. FIRE APPARATUS CIRCULATION PATHS SHALL MAINTAIN A 30' INSIDE RADIUS AND 50' OUTSIDE RADIUS WITH 20' OVERALL CLEARANCE WIDTH (MINIMUM 24' ASPHALT WIDTH) AS SHOWN ON PLAN